



MONTHLY MEMBERSHIP PROGRESS REPORT

District 2 X3

Results as of: 06/30/2018

GMT: JOE AL PICONE

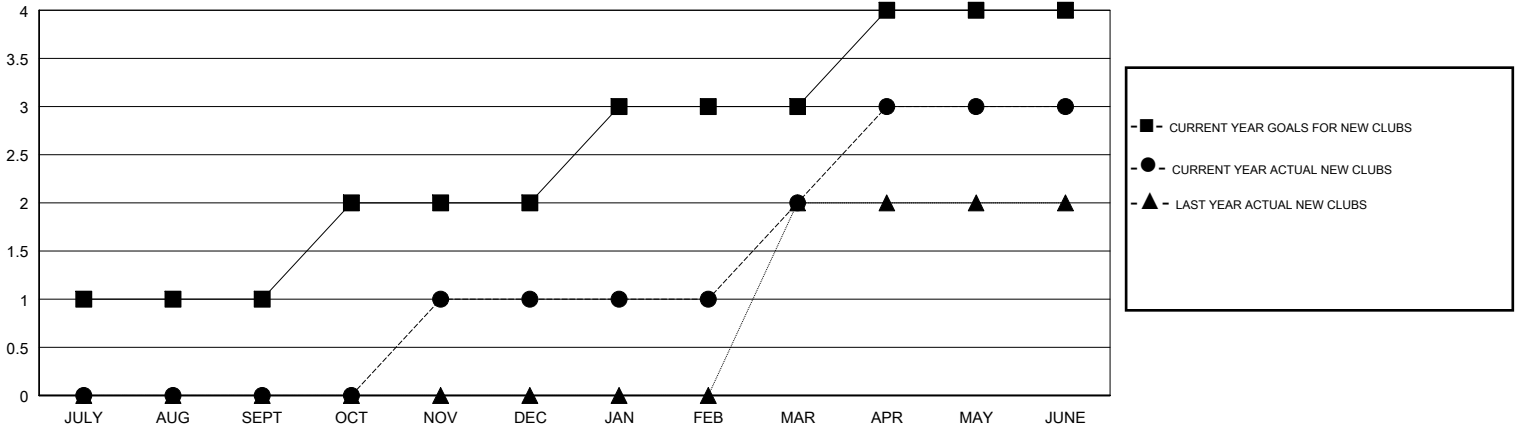
LOCATION TEXAS

GMT CA

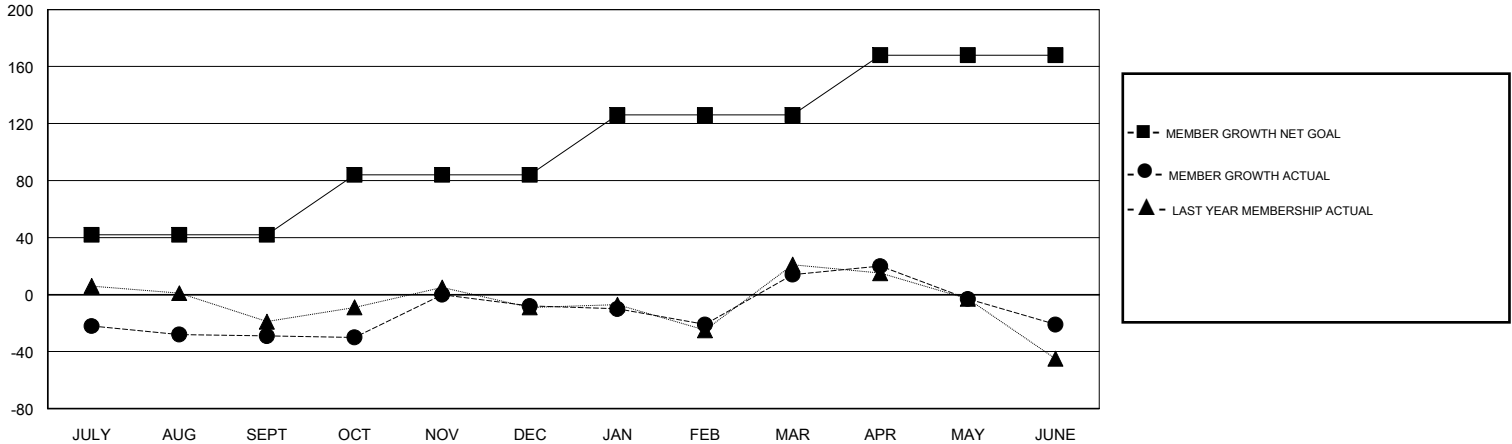
Clubs			
RESULTS FOR 2017-2018			
QUARTER	NEW CLUB GOAL	NEW CLUBS	DROPPED CLUBS
JULY/AUG/SEPT	1	0	3
OCT/NOV/DEC	1	1	0
JAN/FEB/MAR	1	1	0
APR/MAY/JUNE	1	1	1

Members			
RESULTS FOR 2017-2018			
QUARTER	MEMBER GROWTH NET GOAL	MEMBER GROWTH ACTUAL	DROPPED MEMBERS ACTUAL (including transfers)
JULY/AUG/SEPT	42	37	58
OCT/NOV/DEC	42	75	54
JAN/FEB/MAR	42	92	67
APR/MAY/JUNE	42	96	128

GOALS AND ACTUAL NEW CLUBS CUMULATIVE



GOALS AND ACTUAL MEMBERS CUMULATIVE



DROPPED CLUBS: 4

42 CLUBS OF 58 ADDED 1 OR MORE NEW MEMBERS

GENDER DISTRIBUTION
 MALE 992 (65.39%)
 FEMALE 525 (34.61%)
 Women Percentage Fiscal Year Goal: 40%

DROPPED MEMBERS	
DECEASED	22
CLUB CANCELLED	1
OTHER	284
TOTAL	307

[CLICK HERE FOR CUMULATIVE MEMBERSHIP DATA](#)

TOTAL FAMILY UNIT MEMBERS	0
FAMILY MEMBERS PAYING HALF DUES	0